

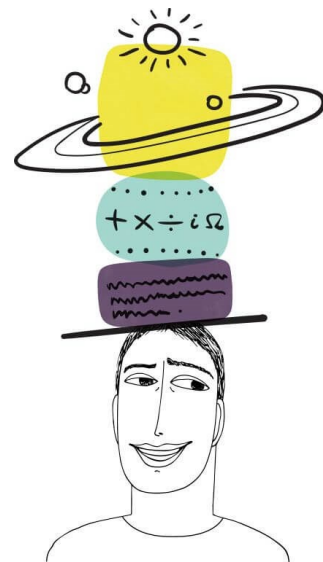


SAT/ACT Diagnostic

Which Test is
Right For You?

[Call us today!](#)
[\(505-359-8300\)](#)

[Register here!](#)



SAT/ACT Diagnostic Not Just An Exam



Developed by Tutors

with over 60,000 hours of tutoring experience



Over 100 Companies

and consultants around the world have relied on our diagnostic since 2011



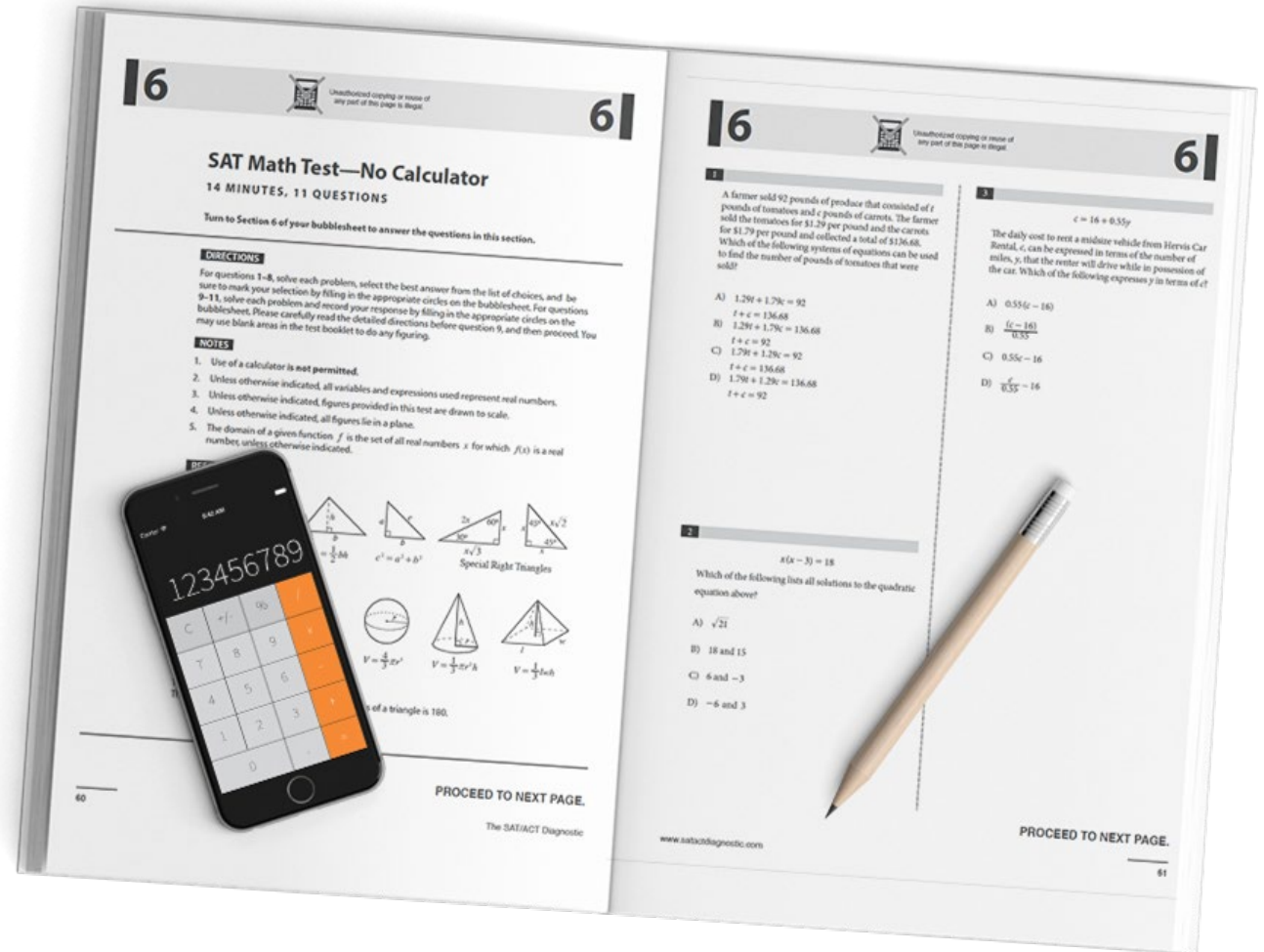
Continuously Updated

to ensure the most up-to-date experience and metrics

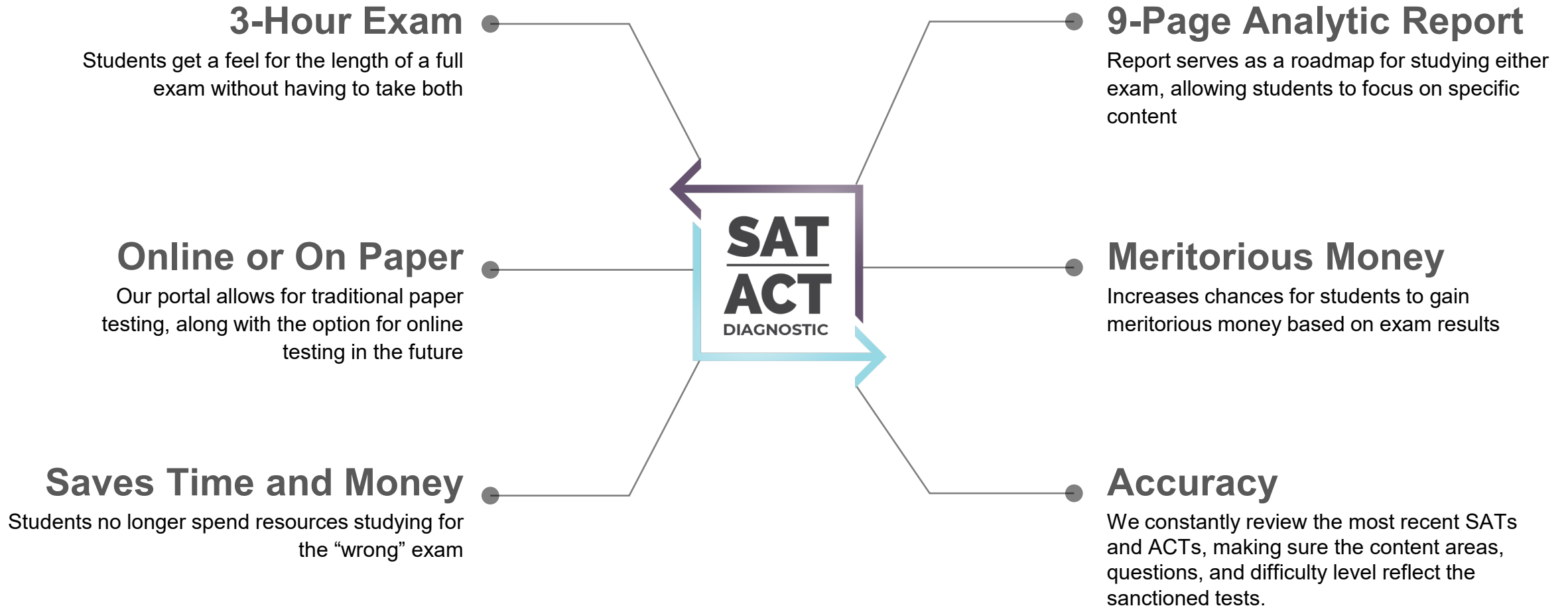


Invaluable Report

that highlights strengths and weaknesses across both exams



Exam Overview



[Register here!](#)

Exam Development



Years in the Making

The diagnostic began over a decade ago as a rough approximation of the exam sections. Experience tutoring, combined with constant edits of the exam, has led to an extremely accurate exam



The Exams Are Our Roadmap

We start with administered exams and count the distribution of question types and their difficulty on each exam. Sections on the diagnostic are shortened but maintain the same proportional question types as the official exams. Verbal passages are calibrated to match the Lexile score and sentence complexity of administered exams



Consistent Edits

While larger changes to the exams require completely new versions of the diagnostic, smaller changes to questions, answers, and texts are done throughout the year



User Data Informs Scoring Tables

To ensure the most accurate results and concordance, we constantly monitor user data and compare with test results. Our scoring tables are updated approximately every six months



Version 2 updates the exam to match the changes made to the SAT, increasing its popularity

2015



2011

The first version of the diagnostic is introduced, changing how consultants and students approach college prep



2019-Present

Version 3 features a complete rewrite of the exam and brings the diagnostic online

Call us today!

The Student Portal



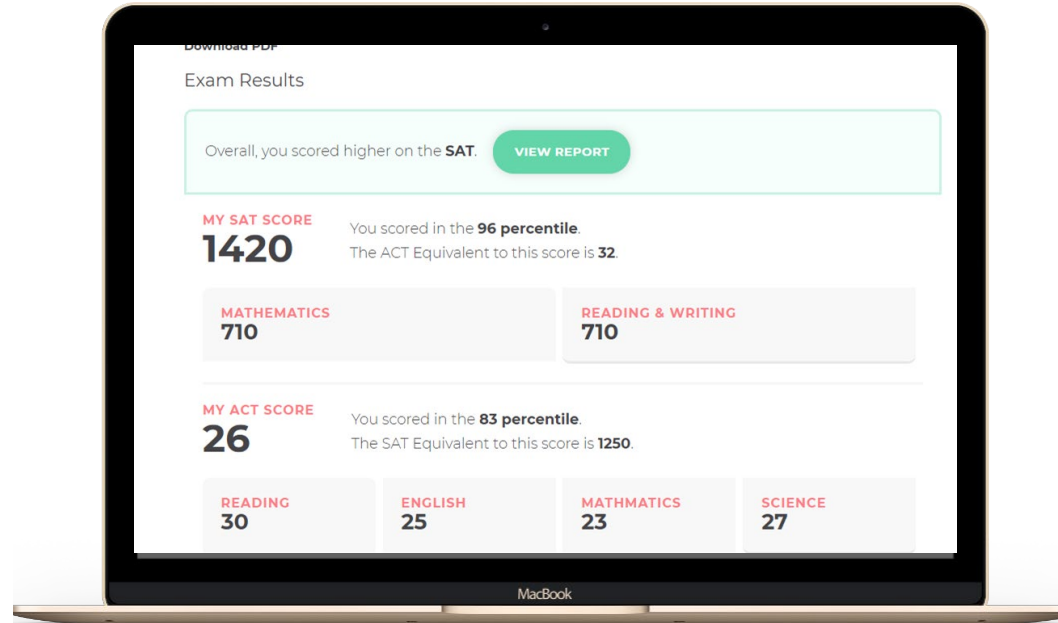
Customized

Accommodations for extra time are available in the student profile section



Track Progress

All test results are available within the portal; students can monitor their prep from diagnostic to official exam



Paper Exam

Once purchased, students have access to the PDF document, allowing them to take the exam online or on paper



Easily View Reports

Reports are immediately available upon exam completion within the student account



Affordable

The diagnostic is just \$29, and credit card information is stored within the portal for subsequent purchases of exams

[Register here!](#)

The Testing Environment

Our Proprietary Software

The environment was built from the ground up with our diagnostic in mind

Essential Features

The environment includes a timer at the top right, along with a “Jump to Question” feature that allows students to quickly move around the section and view omitted questions

Mimic Exams

The environment aims to mimic the exams as closely as possible, down to the aesthetics of the supplemental materials: passages have lines, math equations display correctly, and science passages show all relevant information

The screenshot displays the CPP testing interface on a tablet. At the top, the CPP logo is on the left, and navigation options 'FINISH SECTION', 'JUMP TO QUESTION', and a timer '38 MINS LEFT' are on the right. The main content area is split into two columns. The left column contains a passage titled 'Questions 1–10 are based on the following passage.' The passage is adapted from Jane Austen's *Mansfield Park*. It describes the lives of three sisters: Maria, Louise, and Frances. Maria is a baronet's lady, Louise is a friend of her brother-in-law, and Frances is married to a lieutenant of marines. The right column shows 'Question 1 of 30' with the prompt 'Which choice best summarizes the passage?'. Four options are listed: (A) Three sisters marry well and despite sickness and hardship manage to stay close. (B) Three sisters, who separate due to a falling out from one of their marriages, try to reunite after an 11-year separation. (C) Three sisters each look to marry someone like Sir Thomas Bertram, and the one who does is rejected by her siblings. (D) Marriage is not to be taken lightly and it's far better to marry for love than money. Option B is highlighted with a green border. Below this is 'Question 2 of 30' with the prompt 'In line 3, "captivate" most nearly means'. At the bottom right, there is a link 'Next to Questions 11 - 20'.

Call us today!

The Report | Overview

Immediately Available

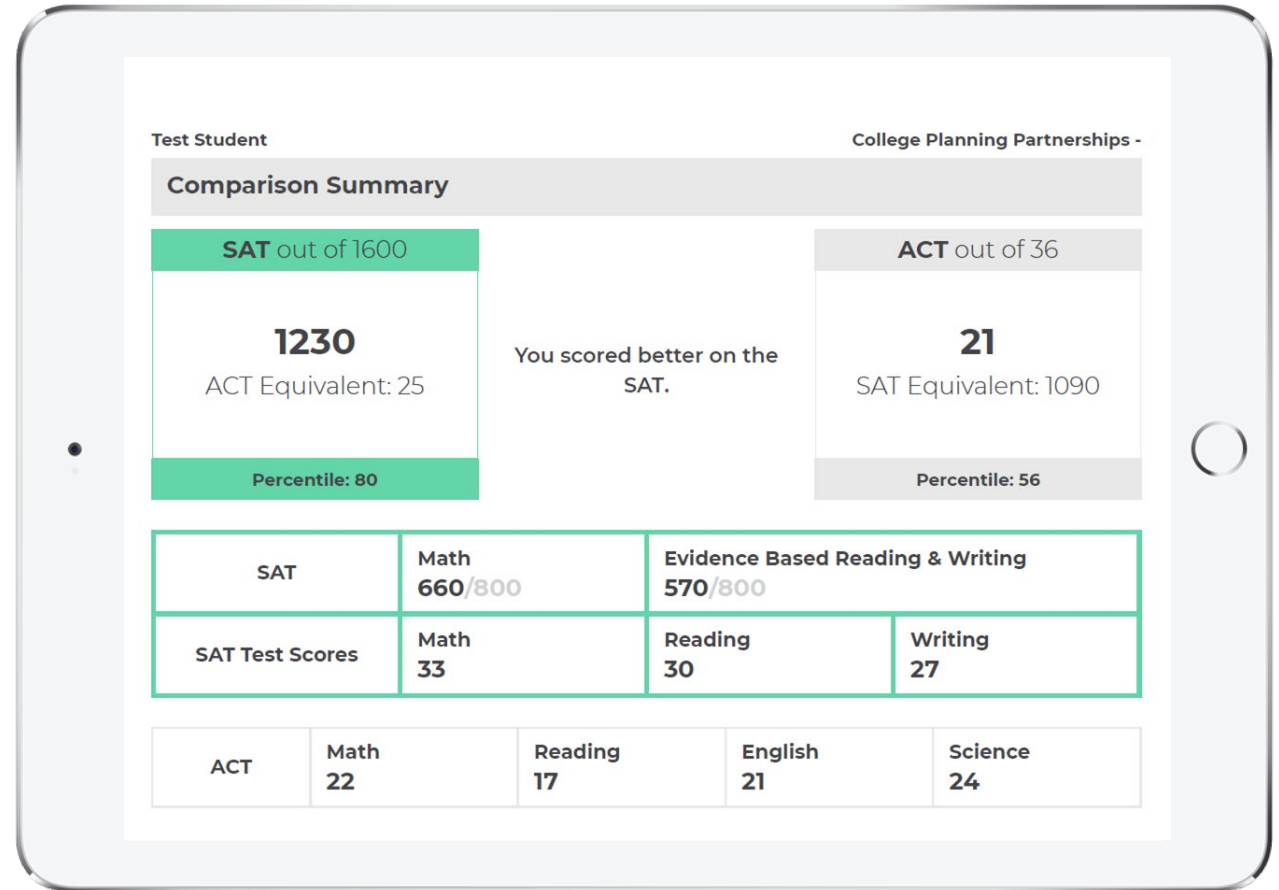
Students have access to their reports the second they have completed an exam

Easy to Read

Quickly determine exam performance by comparing sections scores, concordances, and percentiles

Print as PDF

Save as a PDF document so you can easily send to tutors, teachers, or consultants.



[Register here!](#)

The Report | Section Performance

Test Student: College Planning Partnerships -

Section Summary - SAT Math

Score Summary

Score	660
Correct	23 (75%)
Incorrect	8 (Including 0 omitted)

Difficulty Summary

Easy	Medium	Hard
100.0%	76.92%	33.33%
2 / 2	20 / 26	1 / 3

Top Questions

Note: *c* denotes a problem on the calculator section

Question	Response	Answer	Difficulty	Tags
1	B	+	2	HOA > Linear Systems
2	C	+	2	PAS > Quadratic Equations
3	A	B	2	PAS > Isolate Quantity of Interest
4	A	B	2	HOA > Investigate Key Features of Linear Graph
5	A	+	2	PAS > Produce Equivalent Forms
6	D	C	2	ALG > Exponents
7	B	C	2	HOA > Build Linear Models
8	B	C	2	PAS > Quadratic Equations
9	9	+	2	PAS > Polynomial Operations
10	3/5	+	2	HOA > Linear Systems
11	120	135	3	CEO > Angles, Arcs, Fractions of Circle

Math (no Calculator)

Question	Response	Answer	Difficulty	Tags
1	B	+	2	HOA > Linear Systems
2	C	+	2	PAS > Quadratic Equations
3	A	B	2	PAS > Isolate Quantity of Interest
4	A	B	2	HOA > Investigate Key Features of Linear Graph
5	A	+	2	PAS > Produce Equivalent Forms
6	D	C	2	ALG > Exponents
7	B	C	2	HOA > Build Linear Models
8	B	C	2	PAS > Quadratic Equations
9	9	+	2	PAS > Polynomial Operations
10	3/5	+	2	HOA > Linear Systems
11	120	135	3	CEO > Angles, Arcs, Fractions of Circle

Math (with Calculator)

Question	Response	Answer	Difficulty	Tags
1	B	+	1	PAS > Isolate Quantity of Interest
2	A	+	1	PAS > Polynomial Operations
3	A	+	2	HOA > Linear Functions
4	D	+	2	PS/D > Units, Unit Conversion
5	B	+	2	PS/D > Probability
6	A	+	2	PS/D > Center/Shape of Data
7	B	+	2	PS/D > Evaluate Reports
8	C	+	2	PAS > Polynomial Operations
9	C	+	2	HOA > Linear Systems
10	B	+	2	HOA > Linear Functions
11	A	C	2	PAS > Quadratic Equations
12	D	+	2	PAS > Function Notation
13	B	+	2	HOA > Linear Functions
14	C	+	2	ADT > Circles in Coordinate Plane
15	A	+	2	HOA > Linear Functions
16	7093	+	2	PS/D > Ratios, Rates, Proportions, Scale
17	8	+	2	HOA > Linear Functions
18	3/4	+	2	PS/D > Units, Unit Conversion
19	1	14	3	HOA > Linear Functions
20	8.5	+	3	PS/D > Percentages

Heart of Algebra (HOA)

Number Correct	Questions Missed
8/11	4, 7, c19

Problem Solving/Data (PS/D)

Number Correct	Questions Missed
7/7	

Passport (PAS)

Number Correct	Questions Missed
7/10	3, 8, c11

Additional Topics (ADT)

Number Correct	Questions Missed
1/1	

- **Available on all 8 Sections**

After seeing the overview, students can dive into our detailed analysis for the sections that are giving them the most issues

- **Quickly Spot Incorrect Answers**

Incorrect answers are highlighted in red so students can easily view what types of questions gave them issues on the section

- **View Correct Answers**

Students can review the exam with the correct answers to see what mistakes they made.

- **Breakdown by Difficulty**

Knowing performance by difficulty can help students focus their time and energy on different questions during the exam

- **Content Area Performance**

In the Top Questions feature, students can see their performance on different content areas to assess strengths and weaknesses

Call us today!

Interested in this program?

Register [here](#) or [call us today \(505-359-8300\)](tel:505-359-8300)!

visit:

TutorDoctor.com/Albuquerque/